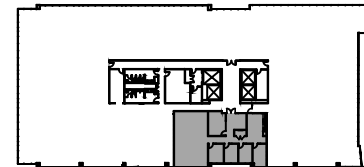
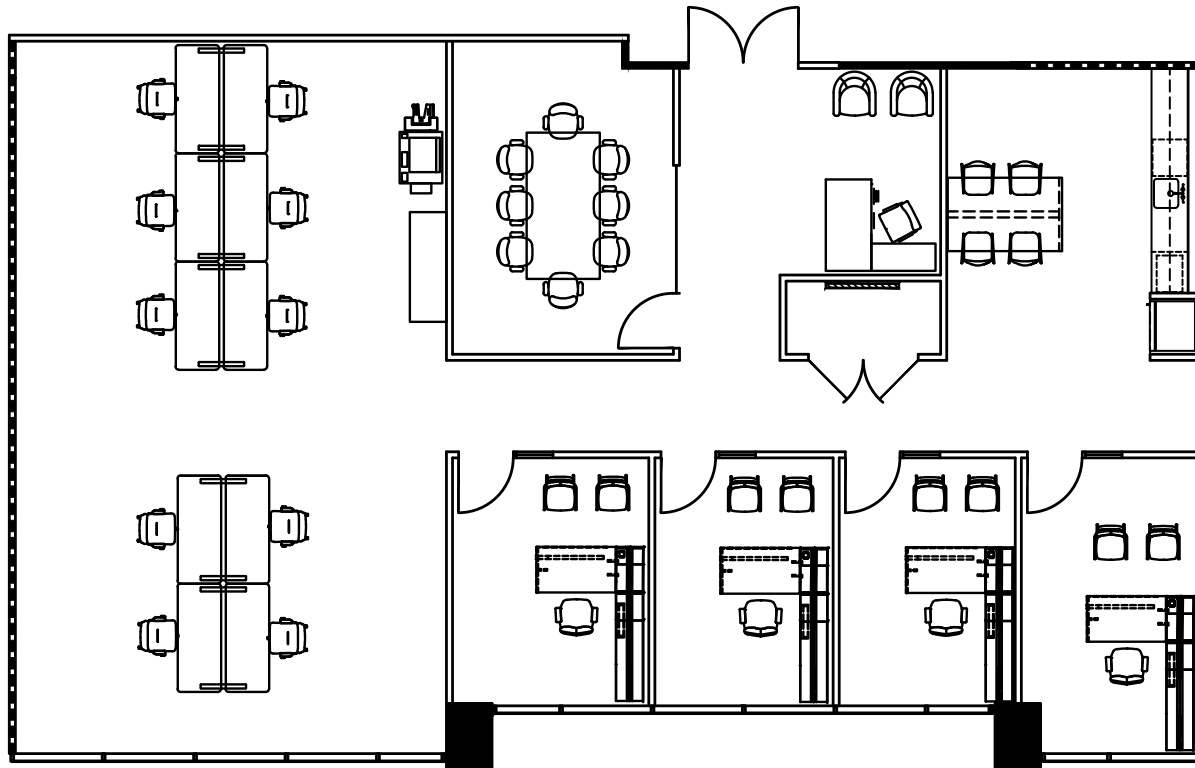




# ONE OAK PARK

6002 ROGERDALE RD, HOUSTON, TX 77072 // ONEOAKPARKHOUSTON.COM



3RD FLOOR SPEC SUITE 350 - 3,251 RSF

FOR LEASING INFORMATION // 713.888.4099

**MATT PRUITT**    **CHRISTIAN CANION**  
matt.pruitt@am.jll.com    christian.canion@am.jll.com

